

# Polymer Plates

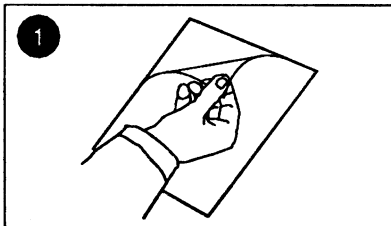
## Standard & Long-Life Polymer Plates

For small to medium-sized printing runs, polymer printing plates are used which, with careful handling, permit several thousand printing operations.

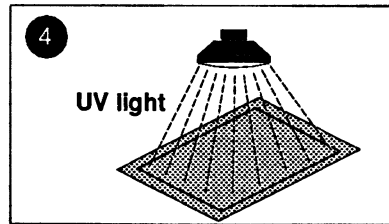
Teca-Print recommends the standard printing plates for small runs, and the long-life printing plates for medium-sized runs. For sealed inking systems, we recommend the use of long-life plates.

Standard- as well as long-life plastic plates are available from stock, both in water and alcohol washable versions.

You will find the different plate types and the processing instructions on the other side.



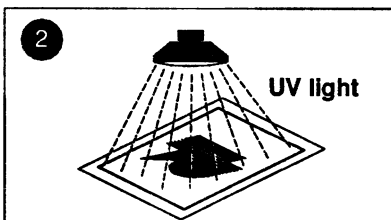
1 Remove protective sheet.



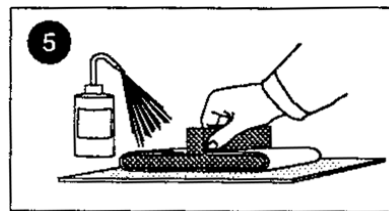
4 Expose plate under screen film.

7

Re-expose in the exposure unit or in the drying cabinet.



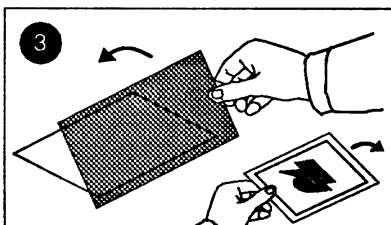
2 Place the delustered positive film with the coating downwards, evacuate and expose.



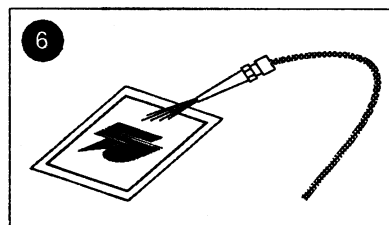
5 Wash plate.

8

Drying in the drying cabinet or oven at the prescribed temperature



3 Remove positive film, place dotted screen film in position with coating downwards, and evacuate.



6 Dry the plate with compressed air jet.

Screen for polymer-plate	
Designation:	<b>E 7812</b> with 120 points per cm.
Dimensions:	<b>130 x 180 mm</b> Art.-No.: 90 00 23
Dimensions:	<b>166 x 600 mm</b> Art.-No.: 90 00 24

# Polymer Plates

## Standard & Long-Life Polymer Plates

# Polymer plate – Technical data

		Water washable				Alcohol washable			
		I 18 ... .. (unpunched) L 18 ... .. (punched)				B 15 ... .. (unpunched) P 15 ... .. (punched)			
<b>Standard plate</b>	Exposure Unit BG .... (in seconds)	351	25/30	35/50	35/100	351	25/30	35/50	35/100
	Exposure time: Roll-film Exposure time: Screen-film	ca. 50 ca. 50	40...60 40...60	40...60 40...60	40...60 40...60	70...80 70...80	80...100 80...100	80...100 80...100	80...100 80...100
	Wash out with plush-cloth rubber:	Wash out for 1.0 min. Water temperature 20 to 25 °C				Wash out for 1.0 min. Room temperature 23 °C			
	Re-expose and dry or: Re-expose, and then dry in the oven	10 min. at 60 °C in the drying cabinet  5 min. in the exposure unit  10 min. at 60 °C				>30 min. at 80 °C in the drying cabinet  5 min. in the exposure unit  30 min. at 80 °C			
<b>Long-Life plate</b>	Exposure Unit BG .... (in seconds)	351	25/30	35/50	35/100	351	25/30	35/50	35/100
	Exposure time: Roll-film Exposure time: Screen-film	40 40	40 40	40 40	40 40	60 60	120 120	150 150	150 150
	Wash with plush-cloth rubber:	Wash out for 2.30 min. Water temperature 28 °C				1.0 min.			
	Re-expose, and then dry in the oven	10 min. in the exposure unit or drying cabinet  30 min. at 100 °C				10 min. in the exposure unit or drying cabinet  30 min. at 120 °C			

The **processing** of our printing plates must take place away from daylight.  
**Room lighting:** Yellow light, darkroom

**Film:** Use a matt film! Matt coated face downwards.

**Screen film:** We recommend our E7812 screen with 120 points per cm.

**Storage:** At 20 - 22 °C and 60 % relative humidity

Exposure unit fitted with tubes		
Exposure unit	Article-no.	Type
BG 35/50 and 501	821 209 663	BASF-Nyloprint or Sylvania F20 W/350 BL
BG 25/30 and 351	821 209 664	
BG 35/100	821 209 672	LT 36 W/010R UV

Dispersion light film	
Exposure unit	Article-no.
BG 35/50	90 00 35
BG 501	89 01 12
BG 25/30	90 00 40
BG 351	89 01 17
BG 35/100	90 00 37

 **Teca-Print**

Teca-Print AG                      Tel. +41 (0)52 645 2000  
     Tel. +41 (0)52 FON TECA  
 Postfach                              Fax +41 (0)52 645 2101  
 Bohlstrasse 17                      info@teca-print.com  
 CH-8240 Thayngen                teca-print.com